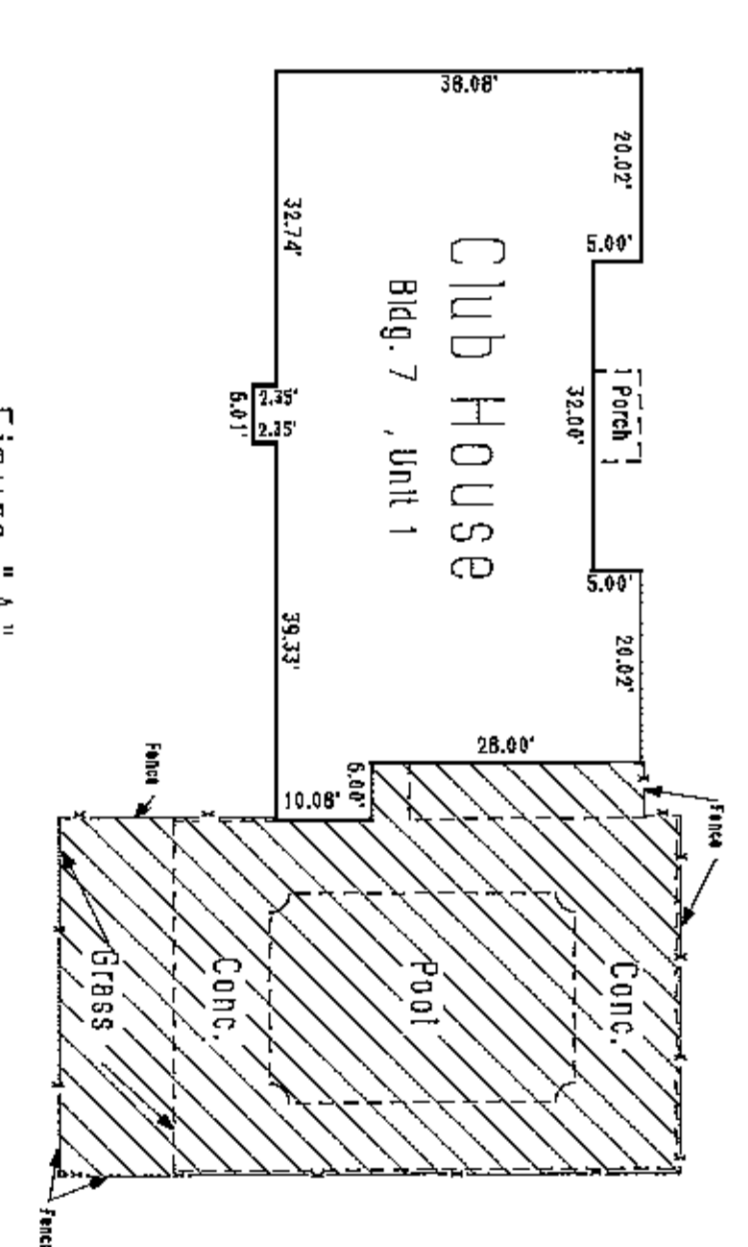
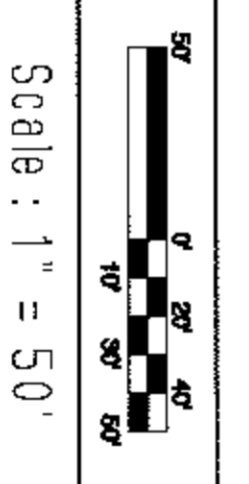
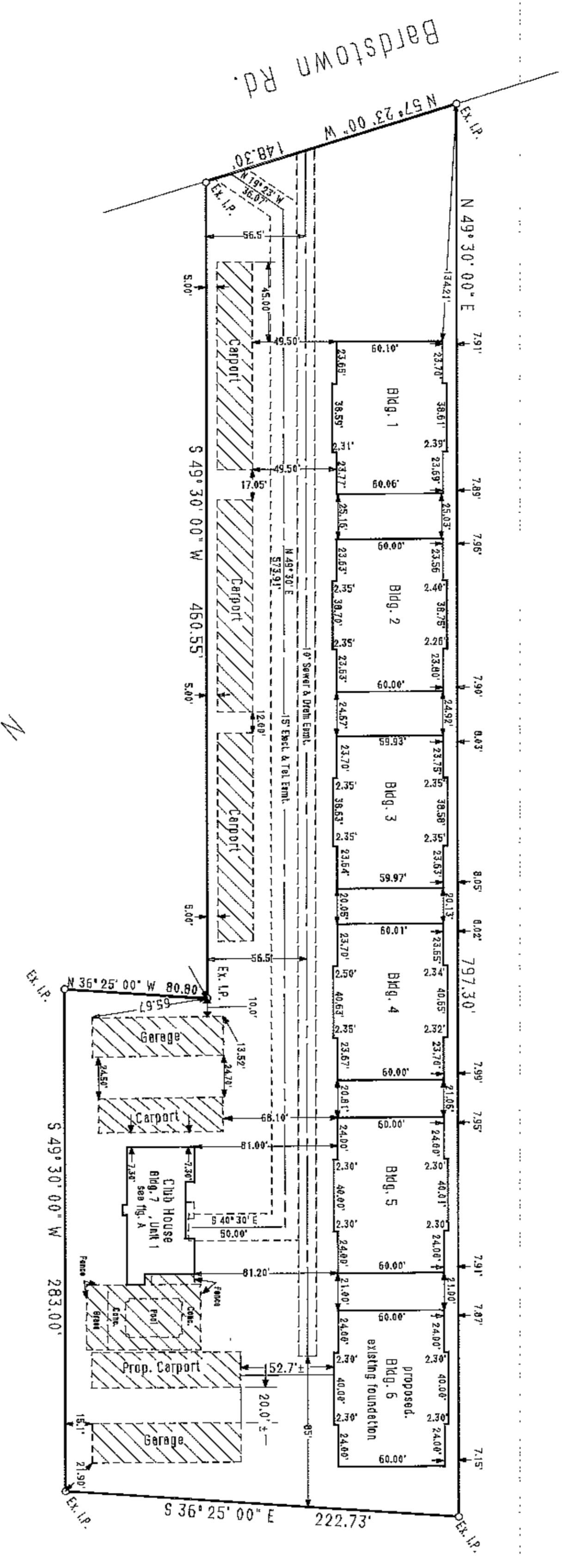


LOCATION MAP
(No Scale)



VERIFICATION & CERTIFICATION

I hereby verify that these plans accurately depict the layout, location, unit numbers and dimensions of these condominiums as built or as proposed.

William H. Holt
Registered Professional Engineer, Ky.



The verification and certification was sworn to before me by *William H. Holt* on the *22nd* day of *May*, 1992.

Thomas J. Brown

Note:
Except as otherwise indicated, all buildings shown are 80% built.

BOOK 6185/666/927

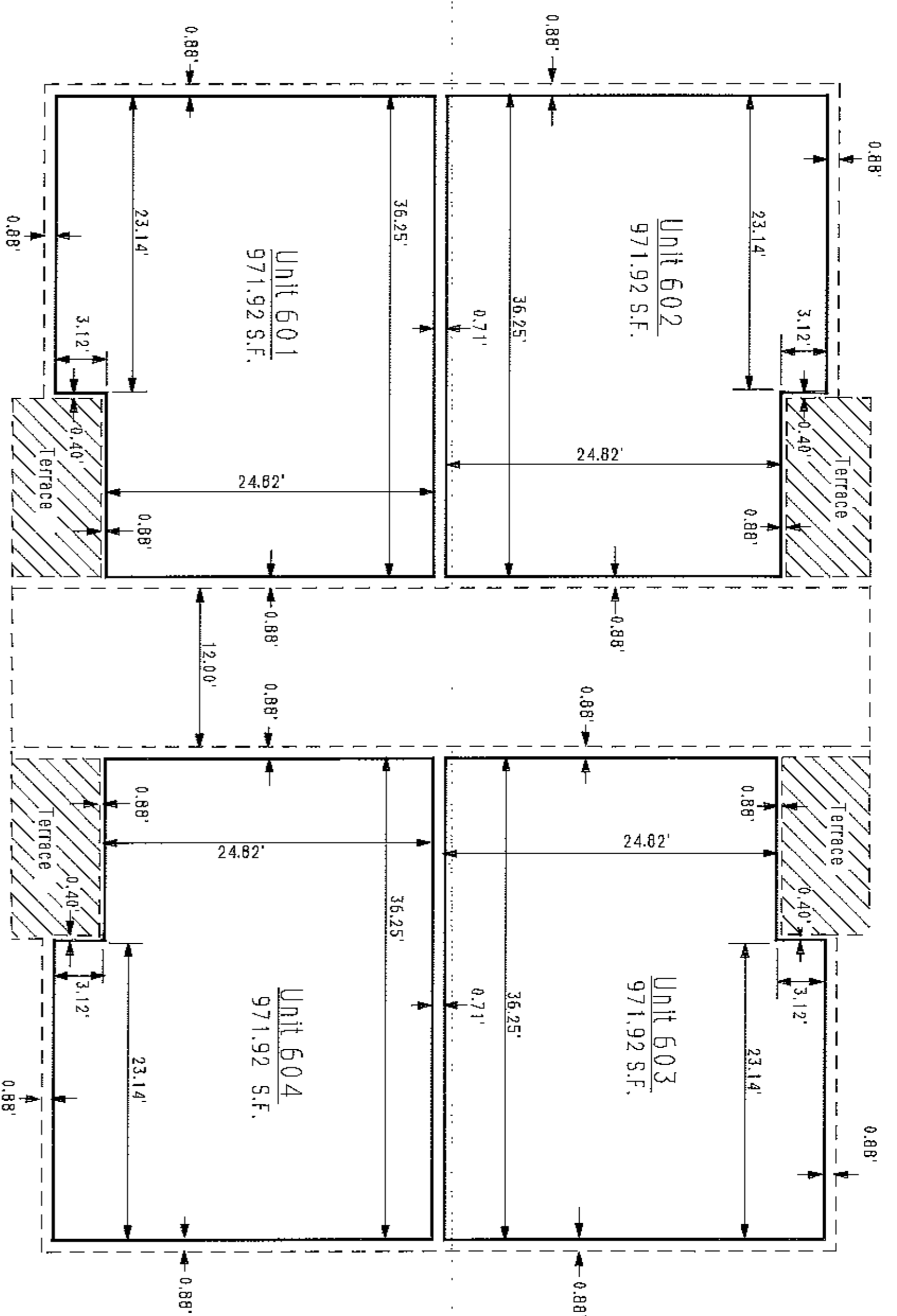
The Pines
(Condominiums)
Buildings 6 and 7
Rodolfo Realty & Building Co. Inc.
173 Sears Ave. Suite 278
Lou., Ky. 40207

Development Planning & Engineering, Inc.
1000 N. Hurstbourne Pkwy.
Louisville Ky. 40223

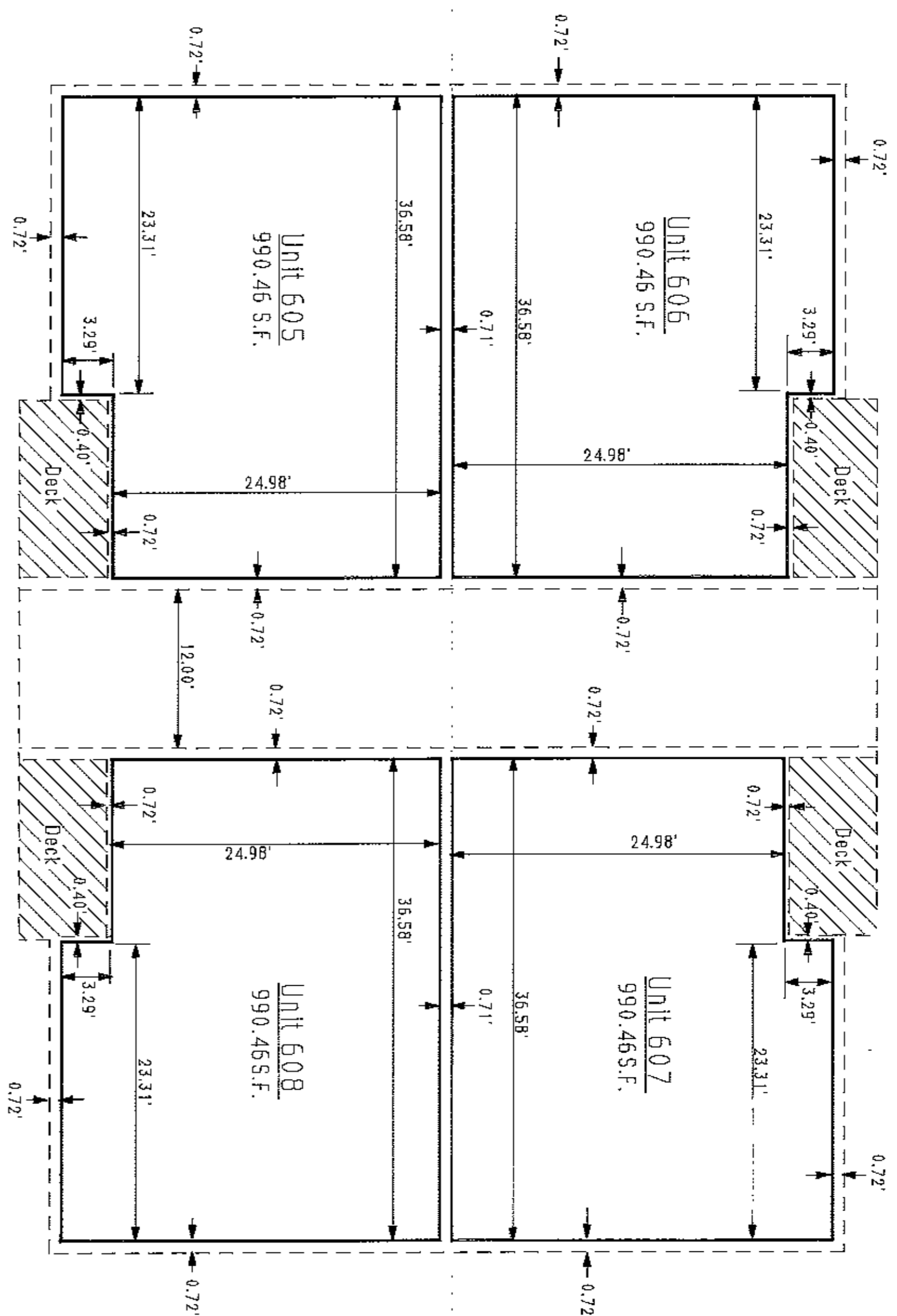
Date: 5/21/92 Job No.: 89-121 Sheet 1 of 2

46 x 4

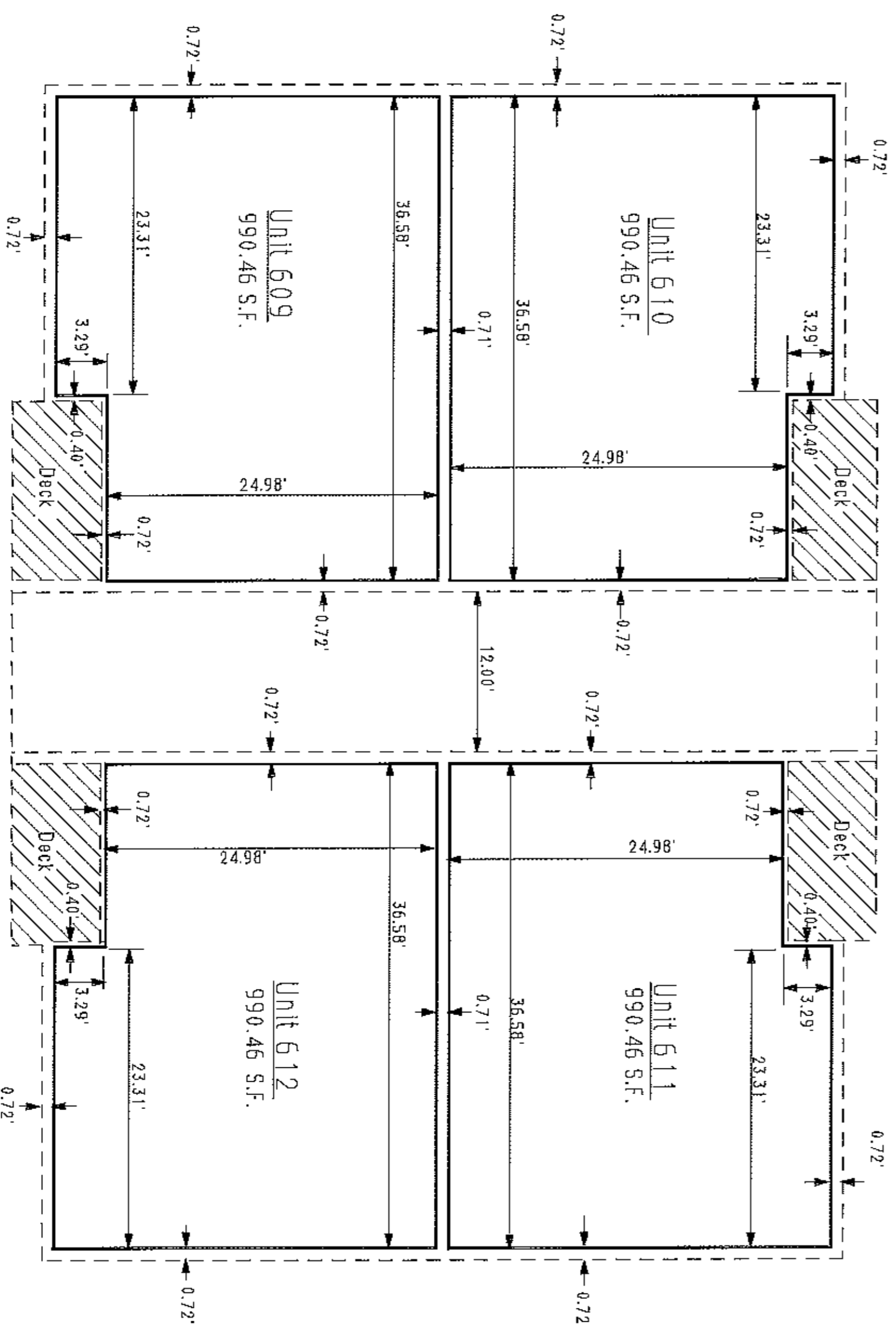
46 x 4



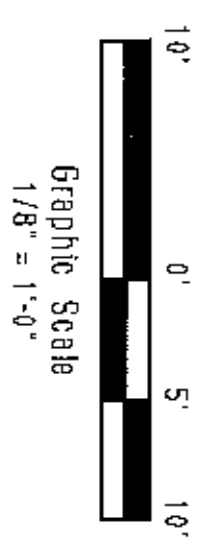
First Floor



Second Floor



Third Floor



1. Each condominium unit consists of the space bounded by a vertical projection of the condominium unit boundary lines shown and by the horizontal planes at the floor and ceiling elevations.
2. LEGEND
 - Boundary of Condominium Unit.
 - Indicates Common Elements.
 - Indicates Limited Common Elements.

BOOK 6185 PAGE 927

BONNICHINE
 ATTORNEY
 BOOK 40 PAGE 5
 FILE NO. 657

As - Planned
 The Pines
 Condominiums
 (Building # 6)
 Rodolfo Realty
 173 Seers Ave. Suite 278
 Lou., Ky. 40207

Development Planning & Engineering, Inc.
 1000 North Hursbourne Pkwy.
 Lou., Ky. 40223

Revised: Jan 25/92
 Drawing No: 202
 1000 North Hursbourne Pkwy.
 Louisville, KY 40223
 Telephone: 452-4600
 Fax: 452-4600
 Project: The Pines
 Property Owner: BBRB

46x5

46x5